



Smart-UPS Modular Ultra

The most sustainable Modular UPS of its kind

The most trusted UPS brand provides more power in a smaller size than ever with the agility to scale power or runtime.

apc.com/smart-ups-modular-ultra

Life Is On



We invented the modular UPS, now we are reinventing it.



2.5x more scalable power protection in half the size with Lithium-ion batteries

The world's most popular UPS is now available with a compact, modular design and improved battery life. APC's Smart-UPS Modular Ultra offers trusted, premium power protection to ensure network and data availability. Designed for local edge environments and row data centers, the Smart-UPS Modular Ultra provides consistent and reliable connectivity at the most critical moments. For the first time, scale up to 20kW of single-phase power protection in a smaller, lighter and more powerful modular UPS. More scalable power in less space enables you to adapt fast and scale as your business grows. Increased UPS battery life and fewer maintenance service costs provide a lower total cost of ownership over 10 years.

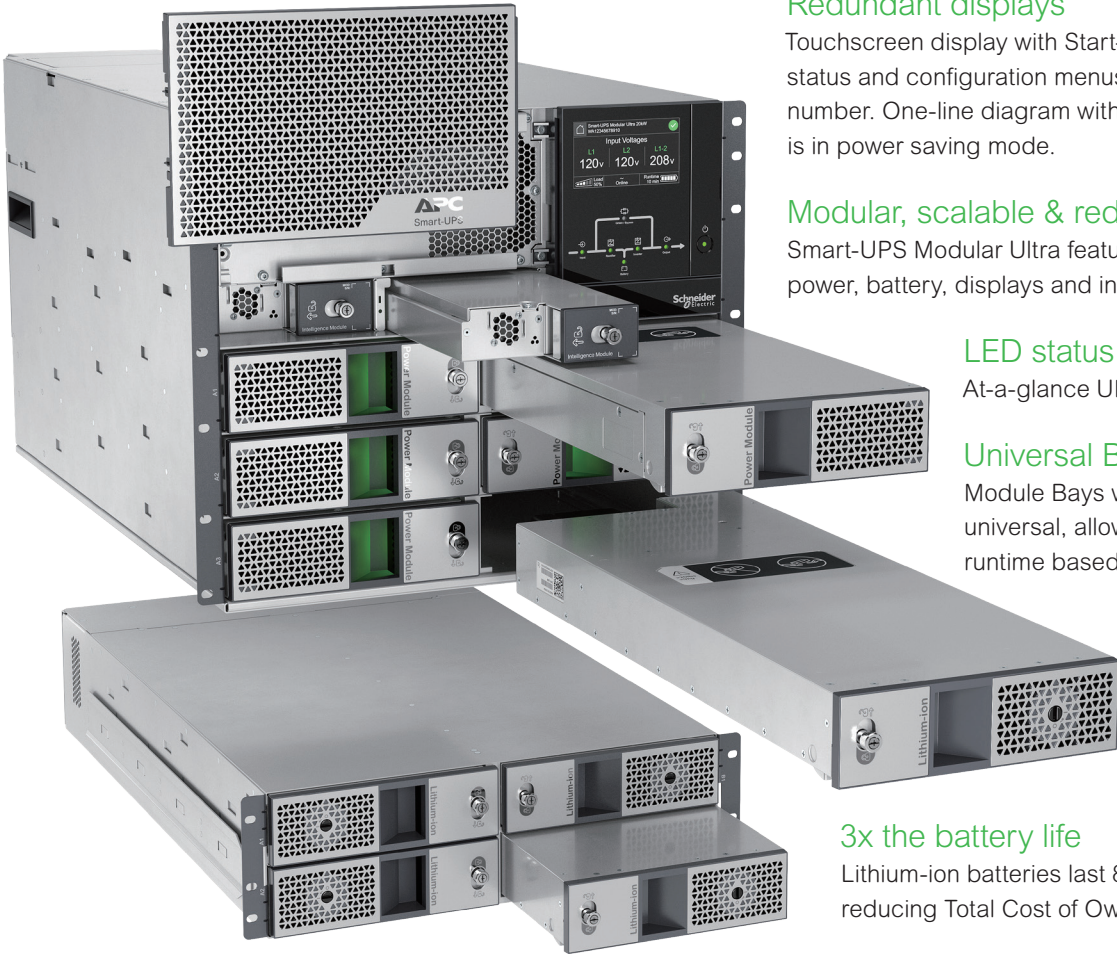
That's Certainty in a Connected World.

The most sustainable modular UPS of it's kind

Best-in-class embedded carbon reduction, agile power & runtime scaling

50% smaller, 60% lighter, 2.5x more power

Next-gen semiconductor technology gives this UPS 2.5x more power in half the size.



Redundant displays

Touchscreen display with Start-up wizard, access to status and configuration menus & data, including serial number. One-line diagram with UPS status when display is in power saving mode.

Modular, scalable & redundant

Smart-UPS Modular Ultra features more redundancy: power, battery, displays and intelligence modules.

LED status indicators

At-a-glance UPS and module status.

Universal Bays

Module Bays within the 9U UPS chassis are universal, allowing you to scale power or runtime based on your current needs.

EcoStruxure Ready

Connect to EcoStruxure™ IT via the embedded network port

3x the battery life

Lithium-ion batteries last 8-10 years (3x VRLA), reducing Total Cost of Ownership.

Why choose a modular UPS?

The modular design allows you to scale power, runtime or redundancy



SRYL5K15RMXL

SRYL10K15RMXL

SRYL15K15RMXL

5kW scalable to 15kW or 10kW N+1

Based on our most popular modular UPS

- 100A input is backwards compatible with Symmetra LX wiring
- 9U height scales up to 15kW without changing your UPS footprint



SRYL5K20RMXL

SRYL10K20RMXL

SRYL15K20RMXL

SRYL20K20RMXL

SRYL20K20RMXL N+1

Scalable to 20kW N+1

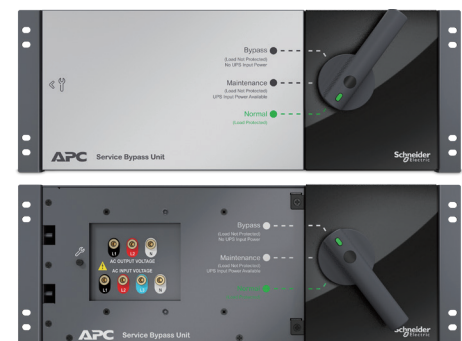
Up to 20kW of single phase power protection

- 125A input scales up to 20kW power protection in a single phase UPS
- 9U height up to 15kW, 12U height for 20kW
- 3U height external battery chassis included with SRYL20K20RMXL

Service the UPS while maintaining the IT load

Service bypass unit

- When installed on top of the UPS, the service bypass unit allows utility power to bypass the UPS
- Lock out tag out feature to prevent unintended bypass of the UPS



SRYLSBP20KP

Designed for Certainty in a Connected World

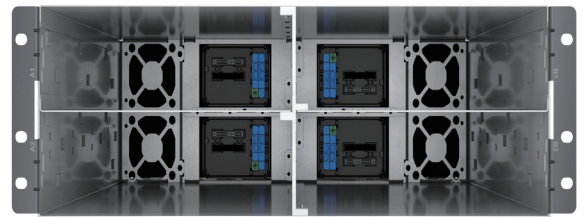
More power, more runtime or both Scalable to 20kW N+1 (20RMXLT)

- The universal bays of the UPS allows for either power or battery modules in each slot.
- Gain more resiliency by adding redundant power or battery modules
- Each external battery chassis has 4 battery module bays.
- Supports up to 6 battery chassis with 4 battery modules each
- The UPS requires a 1:1 battery module to power module ratio. A fully populated 15kW UPS will need 3:3, a 20kW UPS 4:4 and a 20kW N+1 system 5:5.
- The UPS system can support more battery modules than power modules.



SRYL5KPMT

SRYLBM



SRYLFXBPRM4

Runtime estimates

Half/Full Loads	2500/5000W	5000/10,000W	7,500/15,000W	10,000/20,000W
Minimum batteries	(1) 12.4/5.6 min	(2) 12/5.6 min	(3) 12.7/5.7 min	(4) 12.4/5.5 min
Minimum batteries +1	(2) 24.1/11.5 min	(3) 19.1/9 min	(4) 16.4/7 min	(5) 14.8/6.9 min

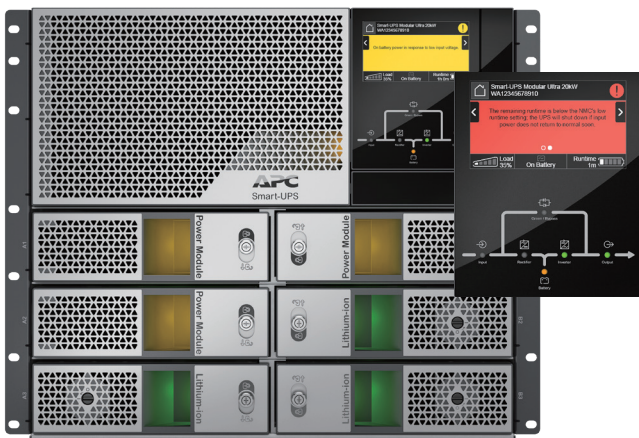
Visit apc.com for additional runtime data and curves on the Smart-UPS Modular Ultra product pages.

Designed for ease of use



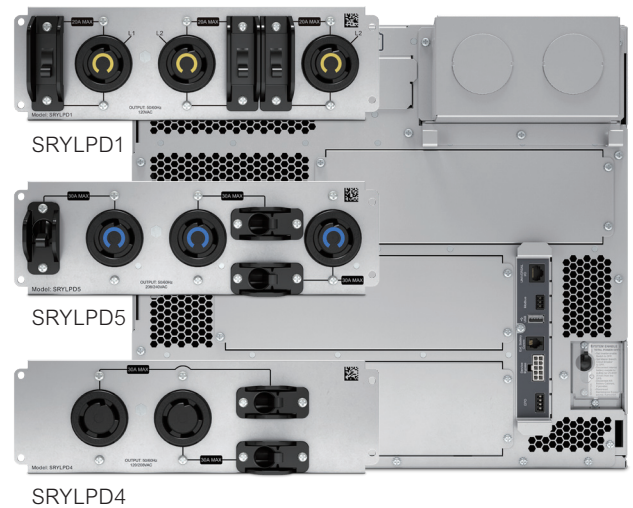
At-a-glance status

Colored LEDs and a touchscreen display provide instant UPS, power or battery module status.

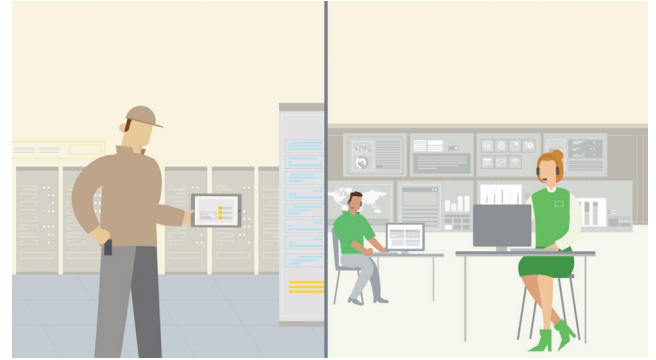
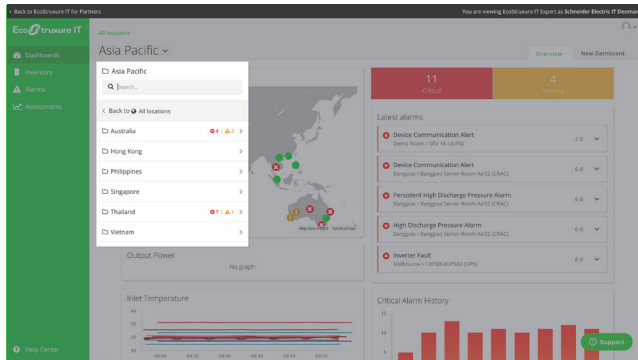


User Selectable PDUs

Smart-UPS Modular Ultra allows you to hardwire your power protection or choose the Power Distribution Units (PDUs) that match your IT needs.



Remote monitoring & management options



EcoStruxure IT Expert

The do-it-yourself advanced monitoring

We empower you to monitor and service customers on your own or provide EcoStruxure IT Expert to your customers who prefer a self-managed option.

Ideal for distributed IT sites and businesses with mixed IT environments.

EcoStruxure IT Asset Advisor

We advise, you maintain

We provide monitoring services, and you handle the maintenance. This option appeals most to partners who want to use their own on-site service.



PowerChute Network Shutdown*

Provides graceful network-based shutdown of physical and virtual IT architectures

Network-based, graceful, unattended shutdown and restart of your physical servers and virtual machines during prolonged power disturbances.



Enable wireless communication

Save network ports by using WiFi Device

The APC USB Wi-Fi Device (AP9834) is a wireless communication accessory for network-based UPS management that replaces traditional wired network cabling.

Smart-UPS Modular Ultra accessories

UPS management accessories

- AP9834: APC USB Wi-Fi Device
- AP9810: dry contact I/O accessory
- AP9335T & AP9335TH: sensor
- SRYLFSU1: APC Smart-UPS Modular Ultra UPS Communication Card
- SRYLFSU2: APC Smart-UPS Modular Ultra XBP Communication Card

User Selectable PDUs

- SRYLPD1: APC Backplate Kit with 3x NEMA L5-20R Outlets for Smart-UPS Modular Ultra
- SRYLPD2: APC Backplate Kit with 6x NEMA 5-20R Outlets for Smart-UPS Modular Ultra
- SRYLPD3: APC Backplate Kit with 3x NEMA L5-30R Outlets for Smart-UPS Modular Ultra
- SRYLPD4: APC Backplate Kit with 2x NEMA L14-30R for Smart-UPS Modular Ultra SRYL
- SRYLPD5: APC Backplate Kit with 3x NEMA L6-30R Outlets for Smart-UPS Modular Ultra
- SRYLPD7: APC Backplate Kit with 3x NEMA L6-20R Outlets for Smart-UPS Modular Ultra
- SRYLPD0: APC PDU Blanking Panel rear for Smart-UPS Modular Ultra

UPS accessories

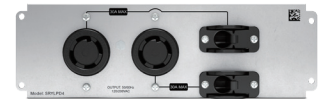
- SRYLSBP20KP: APC Smart-UPS Modular Ultra Service Bypass Unit
- SRYL5KPMT: APC Smart-UPS Modular Ultra 5kW/5kVA Power Module 208V
- SRYLBM: APC Smart-UPS Modular Ultra Lithium-ion Battery Module for Extended Runtime Options
- SRYLRMBP: APC Smart-UPS Modular Ultra External Battery Pack with 4 Battery Modules Rackmount
- SRYLFXBPRM4: APC Smart-UPS Modular Ultra External Battery Frame Rackmount, holds 4 battery modules
- SRYLOPT15: APC Smart-UPS Modular Ultra 15 Ft. Battery Cable Ext. for External Battery Pack 200/208V
- SRYLOPT4: APC Smart-UPS Modular Ultra 4 Ft. Battery Cable Ext. for External Battery Pack 200/208V
- SRYLIM: APC Smart-UPS Modular Ultra Intelligence Module Replacement
- SRYLFSU10: APC Smart-UPS Modular Ultra 4 Post Rail Kit for External Battery Chassis
- SRYLFSU11: APC Smart-UPS Modular Ultra 2 Post Rail Kit for External Battery Chassis
- SRYLF15KRMT: APC Smart-UPS Modular Ultra UPS Frame 9U (no power or battery modules), Scalable to 15kW N+1 Redundant Rackmount 208/120V
- SRYLF20KRMT: APC Smart-UPS Modular Ultra UPS Frame and Battery Chassis 11U (no power or battery modules), Scalable to 20kW N+1 Redundant Rackmount 208/120V



AP9834



SRYLPD1



SRYLPD4



SRYLPD5



SRYLSBP20KP



SRYLRMBP



SRYLF15KRMT

PRELIMINARY DATA - SUBJECT TO VERIFICATION

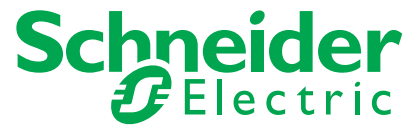
Smart-UPS Modular Ultra



SKU technical specifications

Smart-UPS Modular Ultra rackmount, scalable to 5-20kW				
Topology	On-Line			
Output				
Output power capacity	5kVA/5kW, 10kVA/10kW, 15kVA/15kW, 20kVA/20kW			
Nominal output voltage	120V / 208V, 120V / 240V			
Output voltage distortion	0.5% - full linear load			
Output frequency	50Hz / 60Hz ± 3Hz (Auto Sense), 50Hz / 60Hz ± 0.1Hz User Selectable, 50Hz / 60Hz ± 3Hz User Selectable			
Waveform type	Sinewave			
Output connections	Hard wire 4-wire (2P + N + E), Optional User Selectable PDUs			
Efficiency green mode	up to 97%			
Input				
Nominal input voltage	120V / 208V, 120V / 240V			
Input frequency	40Hz - 70Hz Auto-Sensing			
Input connections	Hard wire 4-wire (2P + N + E)			
Input voltage range for main operations	95V - 150V / 165V - 260V			
Batteries and runtime				
Battery type	Lithium-ion			
Runtime (full load/ half load)	visit apc.com for runtime information			
External battery	Yes - connect up to 6 battery frames, each with 4 SRLYBM battery modules			
Communications and management				
Interface port(s)	Ethernet, Universal I/O, Smart Slot, Modbus, EPO, USB Host x 2			
Network management	Network Management Card Embedded			
Display	Multicolor high resolution Capacitive LCD Touchscreen, One-line diagram, On/Off Button			
Physical				
Maximum HxWxD	UPS Frame 9U 390mm (15.4in) x 440mm (17.4in) x 700mm (28in) UPS Frame 9U + Battery Chassis 3U 520mm (20.5in) x 440mm (17.4in) x 740mm (in)			
Net weight	5kW 160lbs (72.5kg)	10kW 202lbs (91.5kg)	15kW 244lbs (110.5kg)	20kW 327.4lbs (148.5kg)
Environmental				
Operating environment	32 – 104 °F (0 – 40 °C)			
Operating elevation	0-10000 feet (0-3000 meters)			
Storage temperature	5 – 113 °F (-15 – 45 °C) short term storage			
Storage relative humidity	0 – 95%, non-condensing			
Storage elevation	0-50000 feet (0-15000 meters)			
Conformance				
Regulatory approvals	UPS: CUL listed UL1778, FCC Part 15 subpart B Class A Battery Pack : CUL recognized UL1973 and IEC 60730, UN38.3, FCC Part 15 subpart B class A, PSE, UKCA			
Standard warranty	5-Year UPS and batteries			

Life Is On



Learn more today!

apc.com/smart-ups-modular-ultra

Schneider Electric

One Boston Place
Floor 27
Boston, MA 02108
United States
www.apc.com

September 2022

©2022 Schneider Electric. All Rights Reserved.
Schneider Electric | Life Is On is a trademark and the property of Schneider Electric SE, its subsidiaries, and affiliated companies.
• 998-22046474_GMA-US



This document has been printed on recycled paper

